



EXAMPLE SPACE PLAN

OWNER



POINT WEST CORPORATE PLAZA, LLC
 1425 River Park Drive, 2nd Floor, Suite 200
 Sacramento, CA 95815

Office - (916) 927-3008
 Fax - (916) 564-2941
 Website - www.pointwestcorpplaza.com

MANAGEMENT



TSAKOPOULOS MANAGEMENT COMPANY, LLC
 1425 River Park Dr, 2nd Floor, Suite 200
 Sacramento, CA 95815

Office - (916) 927-3008
 Fax - (916) 564-2941
 Website - www.pointwestcorpplaza.com

LEASING BROKERS



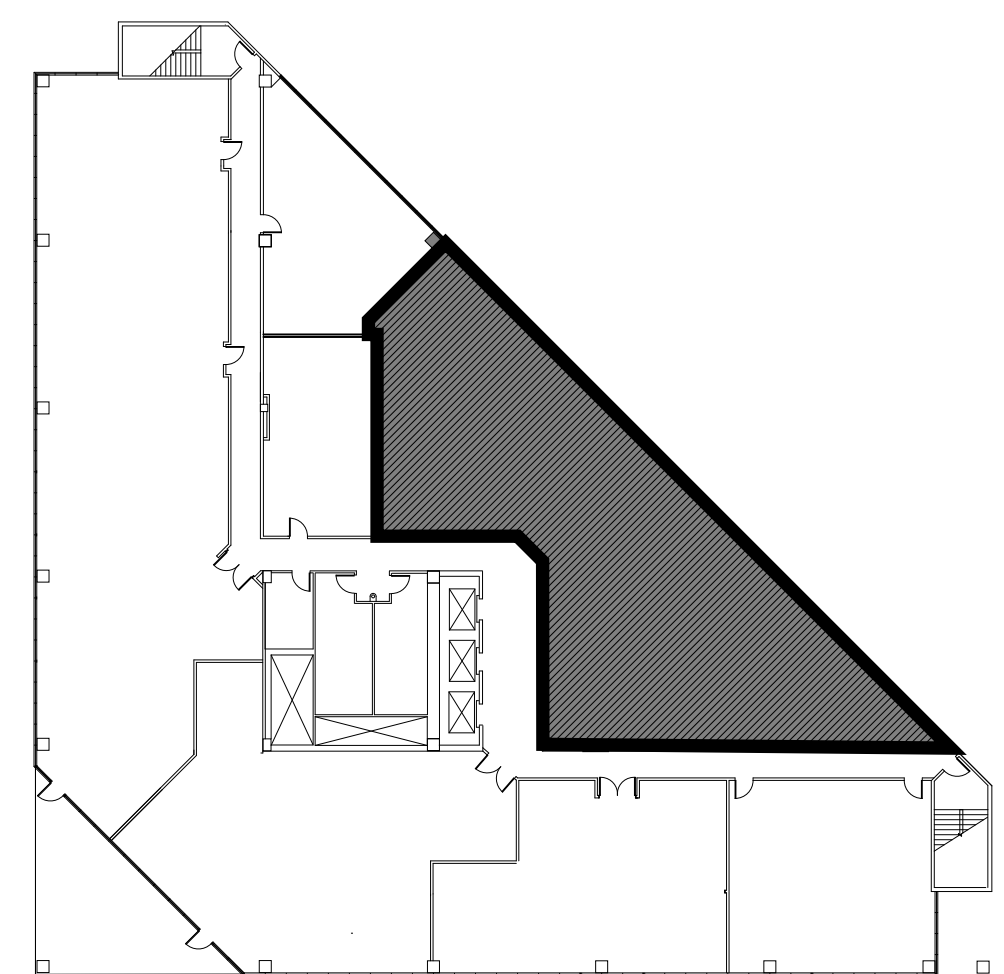
Greg Levi
 Managing Director- Jones Lang LaSalle
 400 Capitol Mall, Suite 1560
 Sacramento, CA 95814

Office - (916) 447-6300
 Direct - (916) 491-4310
 Fax - (916) 443-4758
 Mobile - (916) 812-8285
 Email - greg.levi@am.jll.com
 Website - www.jll.com/sacramento



Alexis Garrett
 Senior Associate- Jones Lang LaSalle
 400 Capitol Mall, Suite 1560
 Sacramento, CA 95814

Office - (916) 447-6300
 Direct - (916) 491-4316
 Fax - (916) 443-4758
 Mobile - (916) 622-1183
 Email - alexis.garrett@am.jll.com
 Website - www.jll.com/sacramento



1435 River Park Drive

5th Floor Suite 500

+/-3,936 rsf





EXAMPLE SPACE PLAN

OWNER



POINT WEST CORPORATE PLAZA, LLC
 1425 River Park Drive, 2nd Floor, Suite 200
 Sacramento, CA 95815

Office - (916) 927-3008
 Fax - (916) 564-2941
 Website - www.pointwestcorpplaza.com

MANAGEMENT

TSAKOPOULOS MANAGEMENT COMPANY, LLC
 1425 River Park Dr, 2nd Floor, Suite 200
 Sacramento, CA 95815



Office - (916) 927-3008
 Fax - (916) 564-2941
 Website - www.pointwestcorpplaza.com

LEASING BROKERS



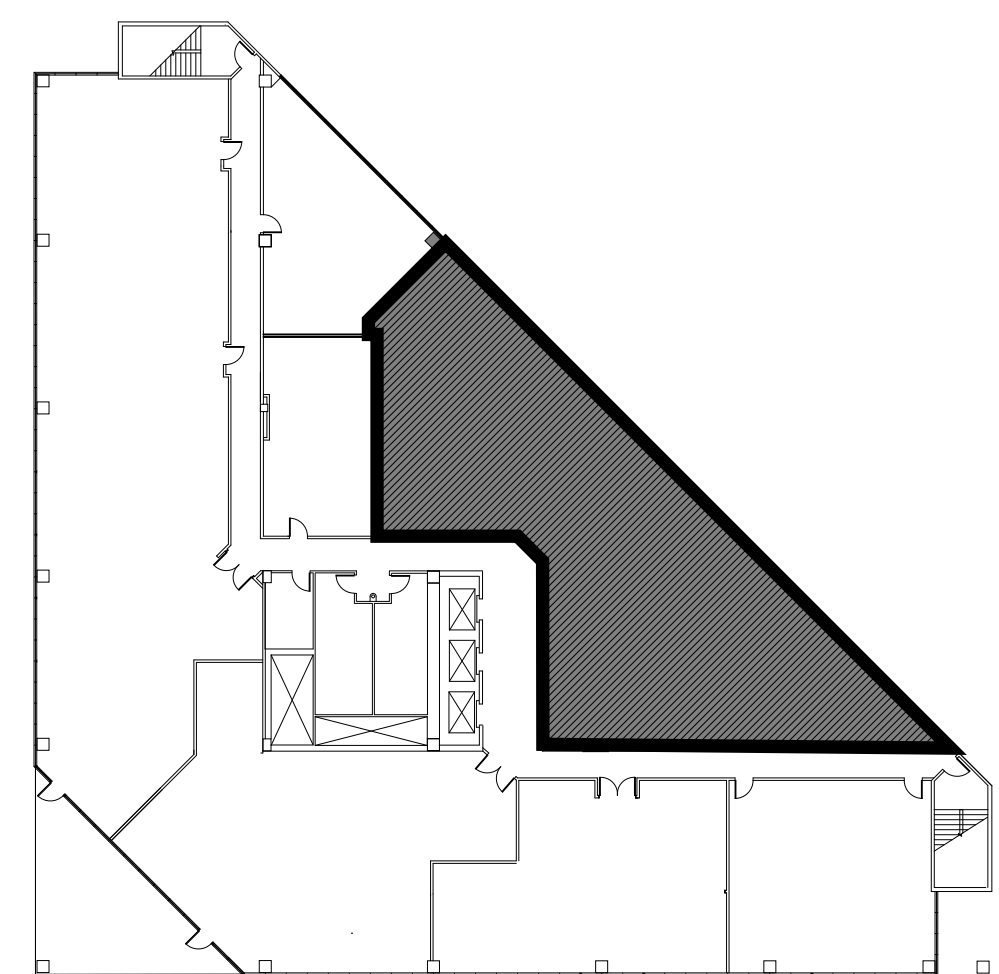
Greg Levi
 Managing Director- Jones Lang LaSalle
 400 Capitol Mall, Suite 1560
 Sacramento, CA 95814

Office - (916) 447-6300
 Direct - (916) 491-4310
 Fax - (916) 443-4758
 Mobile - (916) 812-8285
 Email - greg.levi@am.jll.com
 Website - www.jll.com/sacramento



Alexis Garrett
 Senior Associate- Jones Lang LaSalle
 400 Capitol Mall, Suite 1560
 Sacramento, CA 95814

Office - (916) 447-6300
 Direct - (916) 491-4316
 Fax - (916) 443-4758
 Mobile - (916) 622-1183
 Email - alexis.garrett@am.jll.com
 Website - www.jll.com/sacramento



1435 River Park Drive

5th Floor Suite 500

+/-3,936 rsf

